



## PRECISION COATINGS

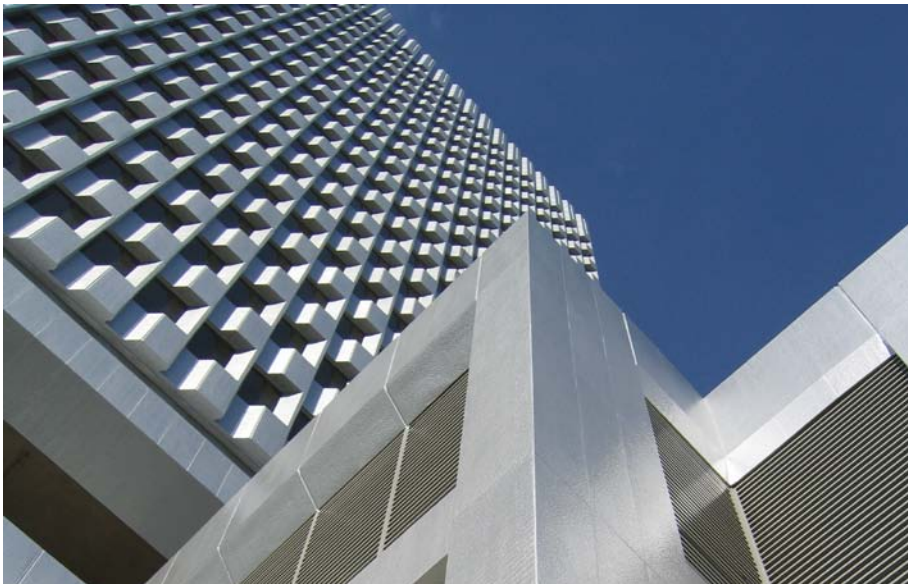
**Case History:** 6300 Wilshire, Los Angeles, CA  
**Coatings:** PC3 Platinum ASRO Rolling Formula  
**Date:** 11.12.2005

**Areas Coated:** Structural panels  
Mullions  
Concrete horizontal and vertical surfaces  
Structural steel

**Description** Twenty-One story, 400,000 square foot office tower with parking garage. Office tower is managed by Tishman Speyer. Original fluorinated coated galvanized steel panels were placed in 1972. Building was recoated in 2005 with PC3 Platinum high cross-link density aliphatic polyurethane. Entire structure was coated with a roller application of PC3 rolling formula.



Photo 9.2007



Steel and concrete substrates